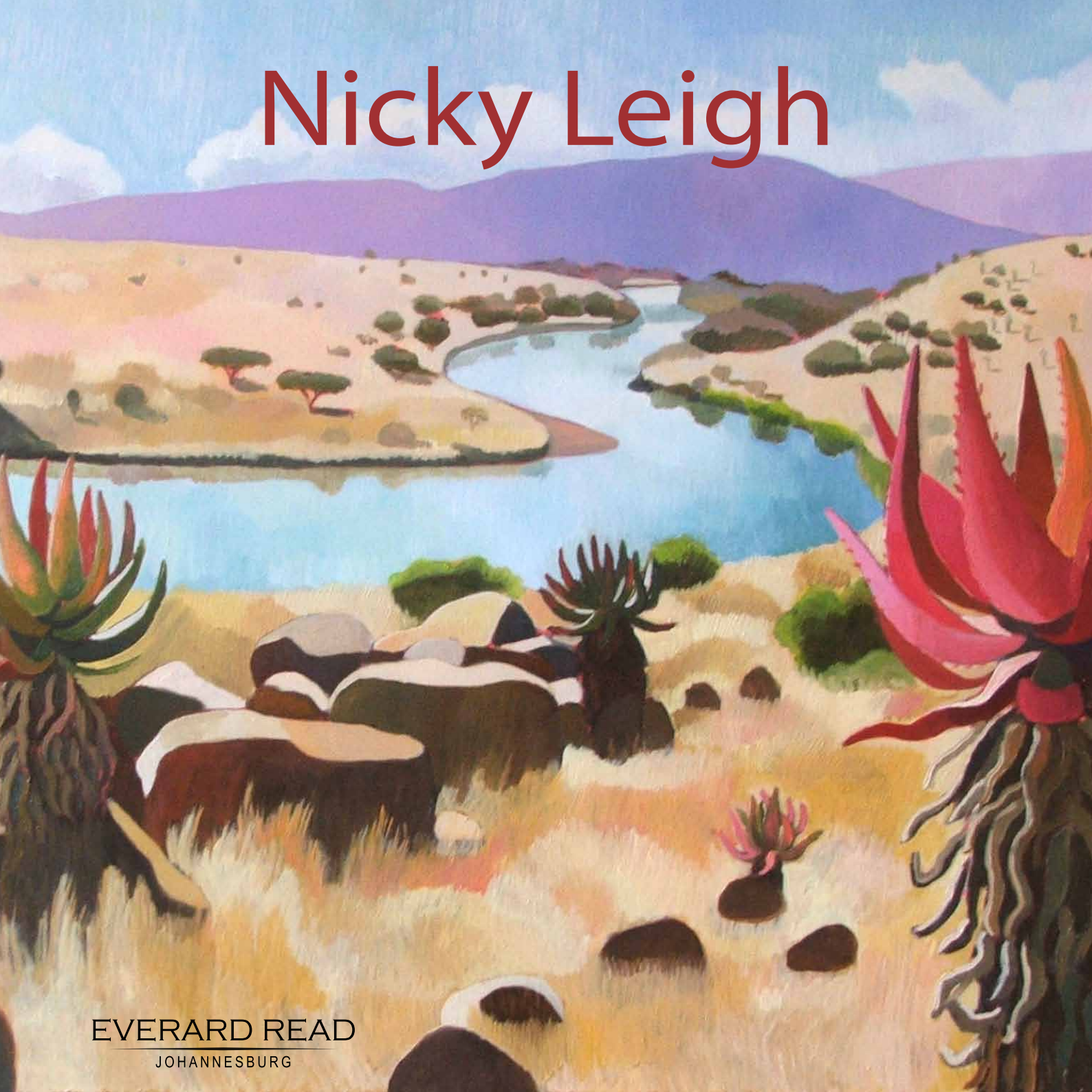


Nicky Leigh



EVERARD READ
JOHANNESBURG



Visions of Eden

African landscapes by Nicky Leigh

17 May – 16 June 2012

EVERARD READ
JOHANNESBURG



FRONT COVER: Buffalo River, Rorkes Drift oil on canvas 90 x 120 cm
TITLE PAGE: Nguni Cattle in veld VII pastel 50 x 65 cm
LEFT DETAIL: Umgeni trees in summer 2010 oil on canvas 77 x 103 cm

'I have a deep sense of the spiritual and it is this that I hope to capture in my work. I am passionate about our magical African landscape and animals. I love to work outdoors and capture a sense of space and colour, the bright uncompromising sun and strong contrasts of light and dark. The timeless rocks are surrounded by air, plants and trees alive with transformation. I would like the viewer to be captivated by a place full of the whispers of eternity as I have transformed it through my eyes.

I love animals and am captivated in particular by the horse and the relationship of man and horse which I see as a metaphor for the relationship of God and man. Underlying my work is a strong personal expression, I try to challenge my ways of seeing and continually strive to find the best way of expressing my vision while remaining authentic in my interpretation. I never seek to be fashionable or cutting edge for the sake of novelty but seek to remain sincere in expressing how I see and feel about a subject.'

Nicky Leigh



PHOTOGRAPH: Ian Carbutt 2009

BIOGRAPHY

Leigh was born in Carolina, a small town in Mpumalanga but grew up in Pietermaritzburg – KwaZulu-Natal. She regarded her grandparents' farm near Carolina, as her second home.

Leigh's grandmother was Ruth Everard, second generation member of the Everard group. Ruth and her husband Denholm Haden lived on the farm Riverlands which bordered on the farm Bonnefoi. Both these places and the surrounding country have been a great inspiration to Leigh.

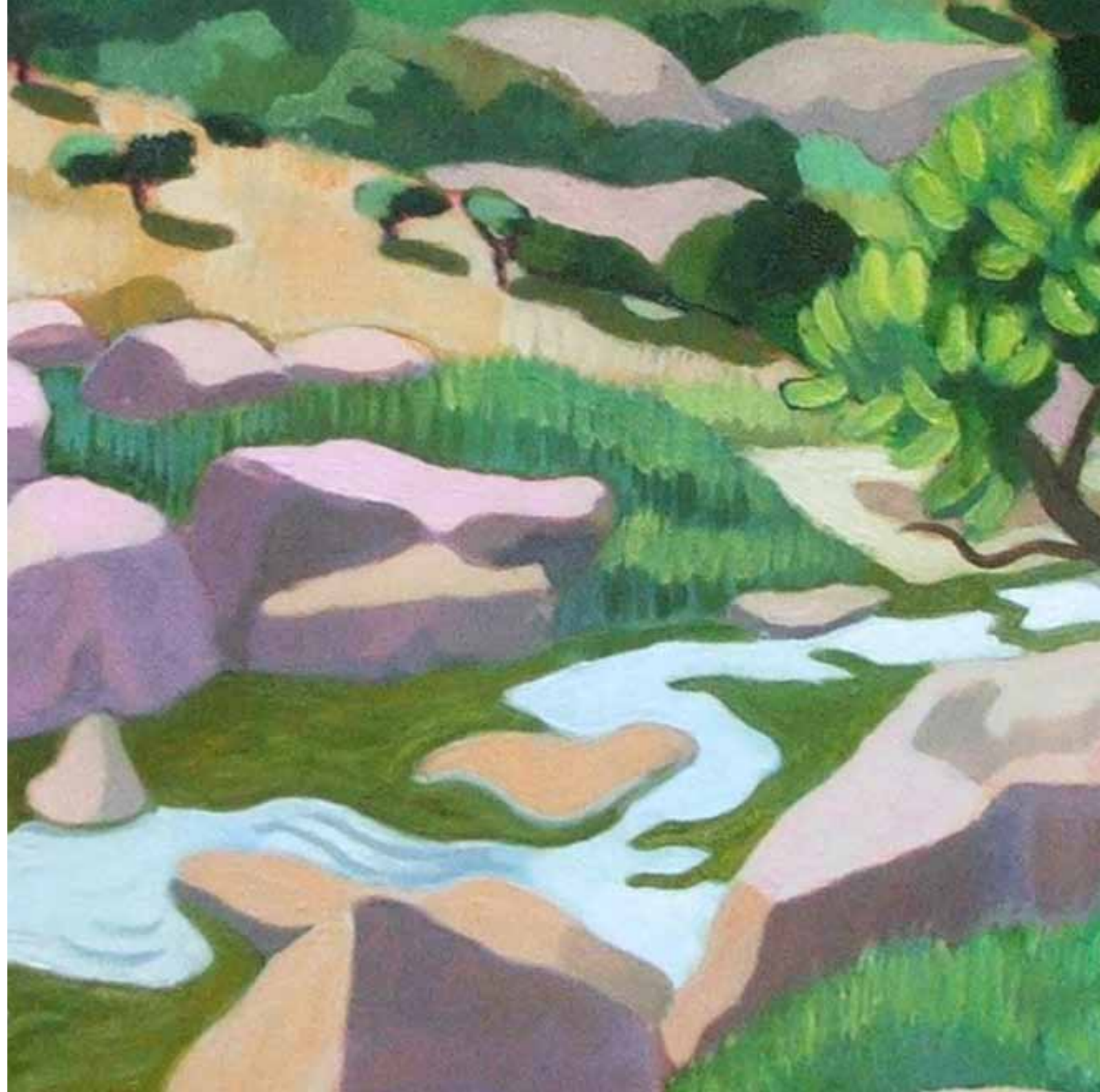
After matriculating Leigh worked for a year at the Natal Archive depot as a technical assistant. The following year she studied for a BA Fine Arts at the University of Natal, Pietermaritzburg. She was taught by her father, Derek Leigh, artist and senior arts lecturer at the University of KwaZulu-Natal. After graduating she worked for a year as an assistant at the Tatham Art Gallery, Pietermaritzburg, and following that as a layout artist at the Natal Witness. Leigh then decided to take up her painting full time and to supplement her income designed and printed t-shirts which she sold

at the local market. Over the years she has given art classes for children and art courses for adults at her studio in Pietermaritzburg.

Leigh has travelled to England, France, Italy, Turkey, Greece, The Netherlands, Belgium and Scotland. She has also travelled in Africa and moved to Cape Town for a Year and lived and worked in Hout Bay. Leigh now works full time on her painting and is an established artist with works in numerous private collections in South Africa, England, France, America and the Netherlands. She also has works in public and corporate collections. She has had three solo exhibitions and two joint exhibitions and has exhibited on numerous exhibitions over the years. Her solo exhibitions are theme based and she has worked and exhibited consistently over the years. She works in a variety of media: oil, pastel, watercolour, acrylic, charcoal and ink. Her subject matter ranges from landscapes, still life, animals, portraits, dream imagery, figures and nudes. Leigh is a fourth generation member of the well known Everard group of artists.

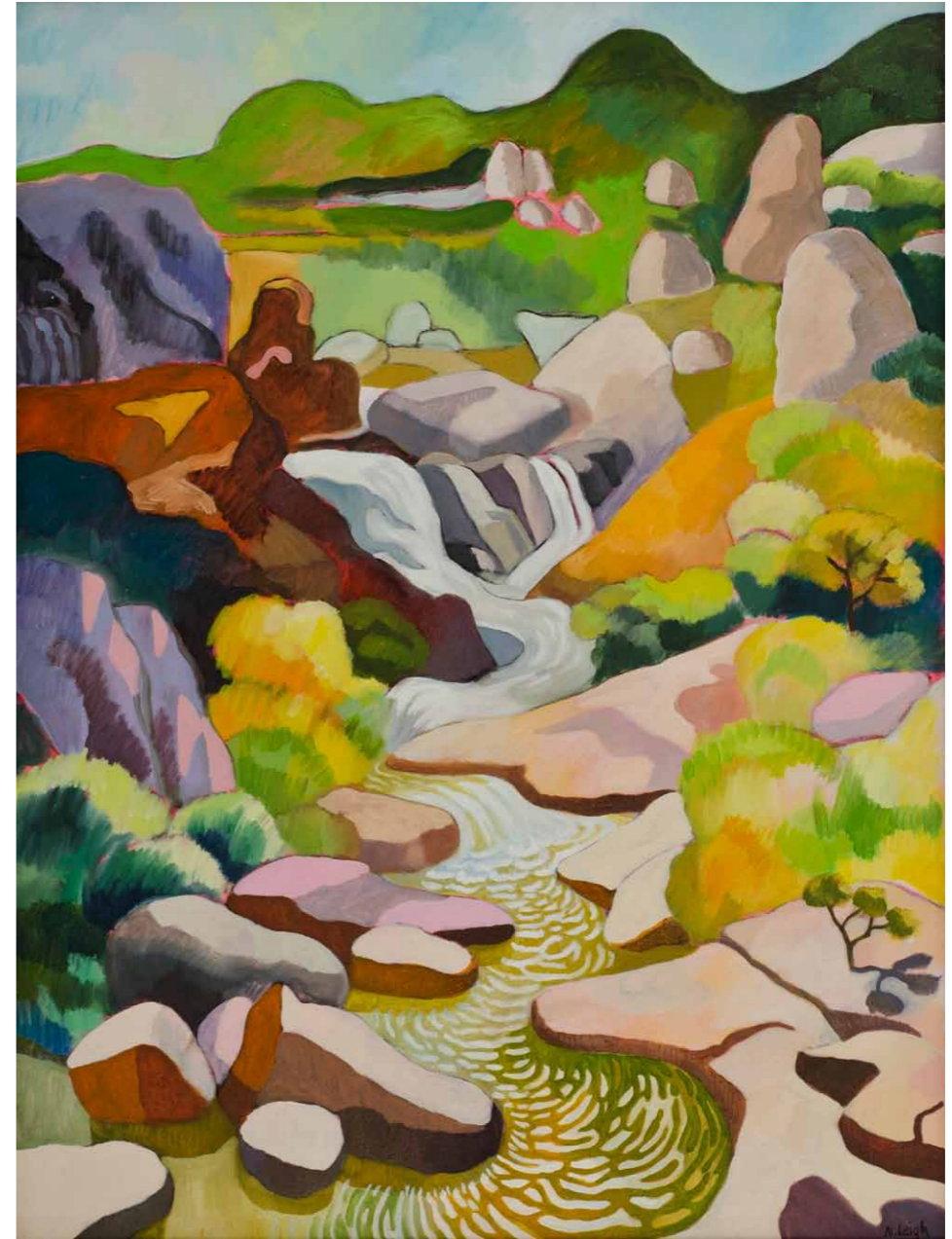


Badplaas. Mpumulanga 2012 oil on canvas 90 x 120 cm



'Underlying my work
is a strong personal or
spiritual expression.'

Nicky Leigh



Nels River, Lowveld Bots Garden, Nelspruit oil on canvas 90 x 120 cm



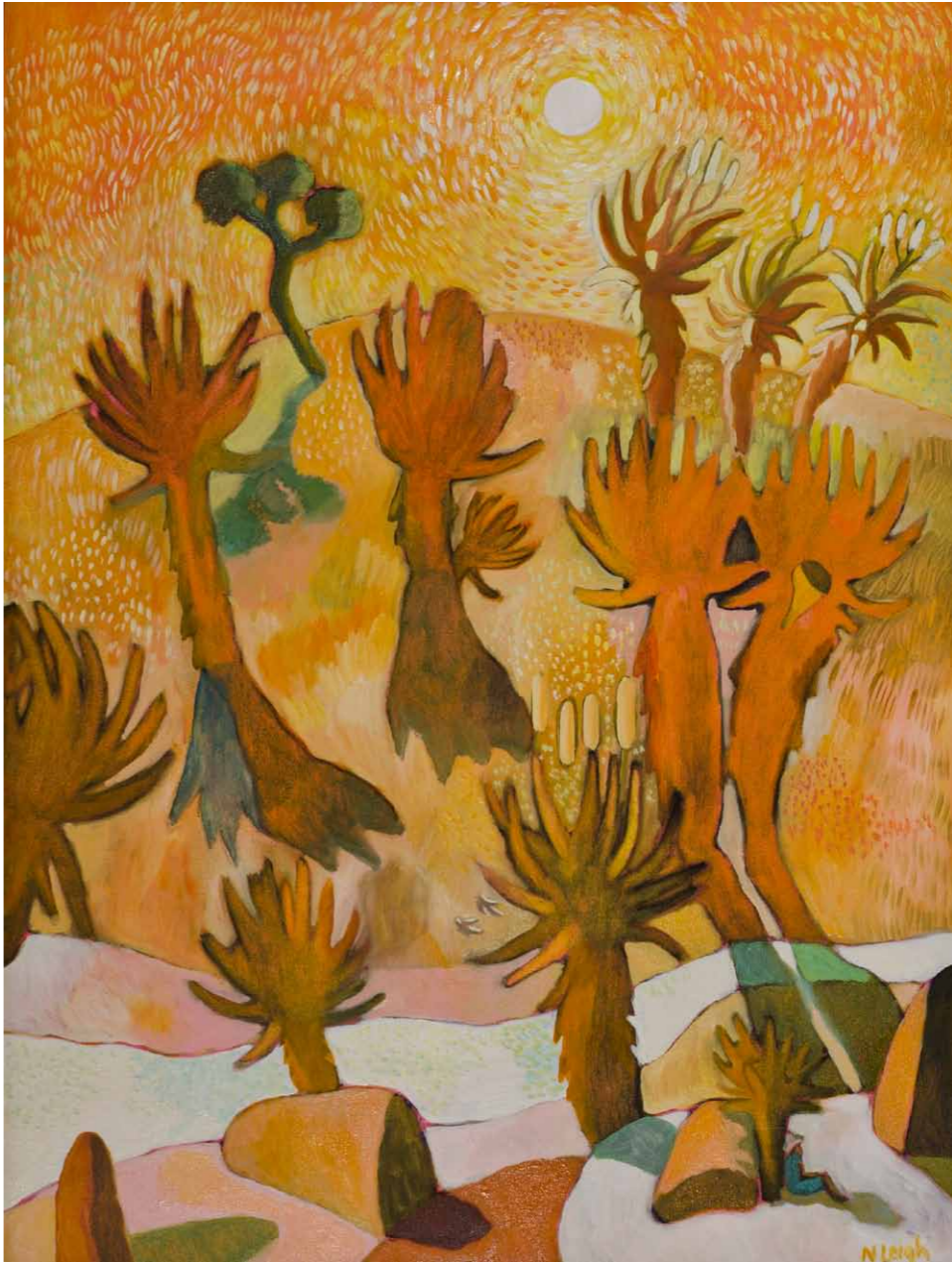
Buffalo River, Rorkes Drift 2010 oil on canvas 90 x 120 cm



Mountainlands reserve. Barberton 2011 oil on canvas 90 x 120 cm

The chromatic range of her oil evokes our senses. Shadows exist as colour rather than tone. Intense colours and arresting textures, are equivalents for her emotions.

Julia Meintjes 2008



Sun Aloes Spionkop 2011 oil on canvas 90 x 120 cm



Umgeni Trees in Summer 2010 oil on canvas 77 x 103 cm



Baptism Among the Aloes oil on canvas 38 x 50 cm



Ngunis at Cumberland watercolour 55 x 75 cm

'Nichola Leigh's landscapes are more distorted, broken dots and shapes of flat monumental barrages, a cacophonous avalanche of falling debris devoid of perspective and a colloidal amalgamation of the inner forces of erupting nature.

Like her grandmother, grand aunt and aunts her use of colour is a mixture of local earth and flora with inclusions of pure rich punctuated intense hues where emotions and equivalents for emotion are accentuated by the variation of technique'



Giants Castle with Proteas oil on canvas 77 x 103 cm



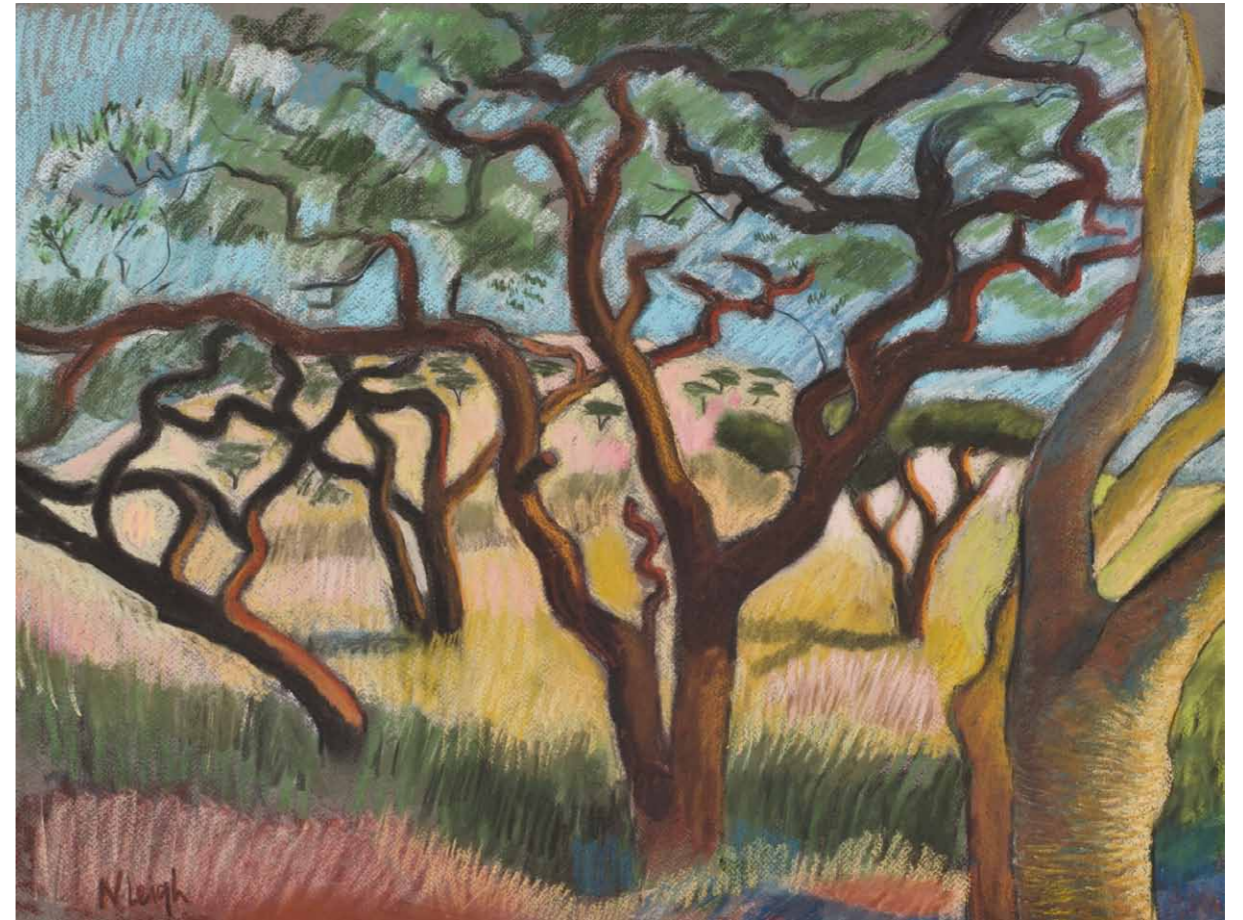
Kruger Park Huts with Monkeys oil on canvas 77 x 103 cm



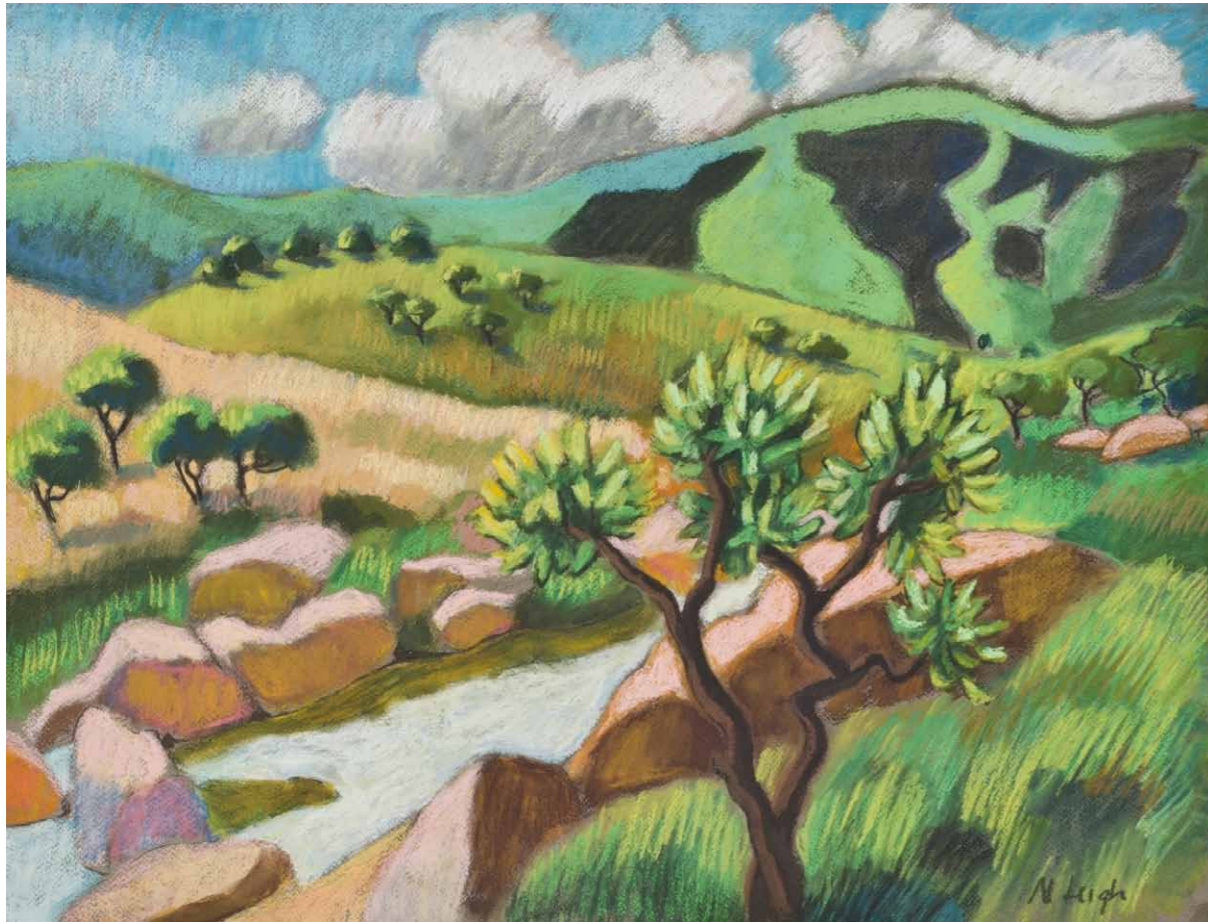
Mountainlands Reserve, Barberton pastel 50 x 65 cm

'There have been many times when it has been so difficult that I have wanted to give up. But I have persevered in spite of many doubts. Depression and self-doubt were constant companions for many years. The sacrifice one makes is sometimes ones sanity.'

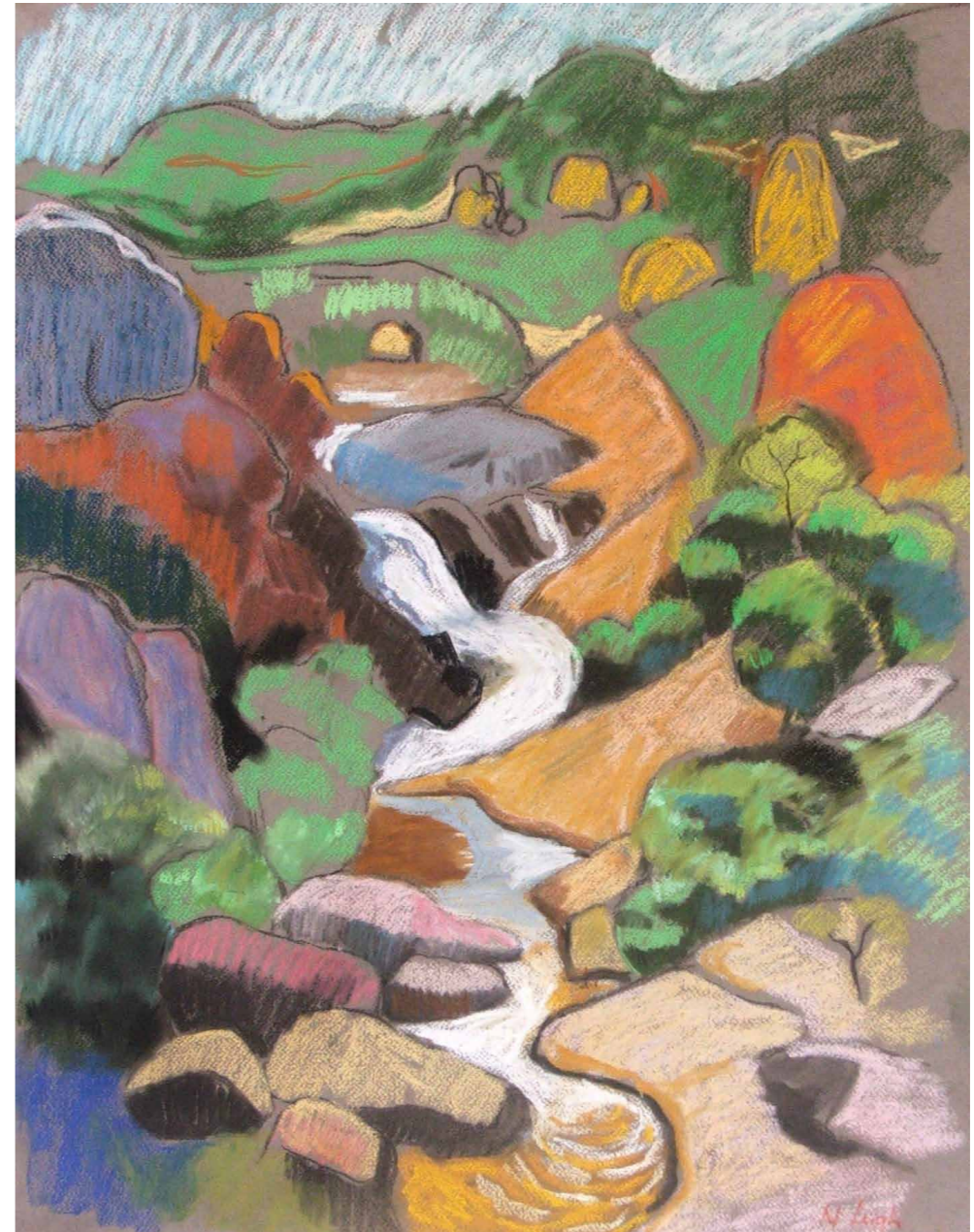
Nicky Leigh



Cumberland Thorn Trees pastel 50 x 65 cm



Badplaas, Mpumalanga pastel 50 x 65 cm



Nels River, Lowveld Bot gardens, Nelspruit pastel 50 x 65 cm



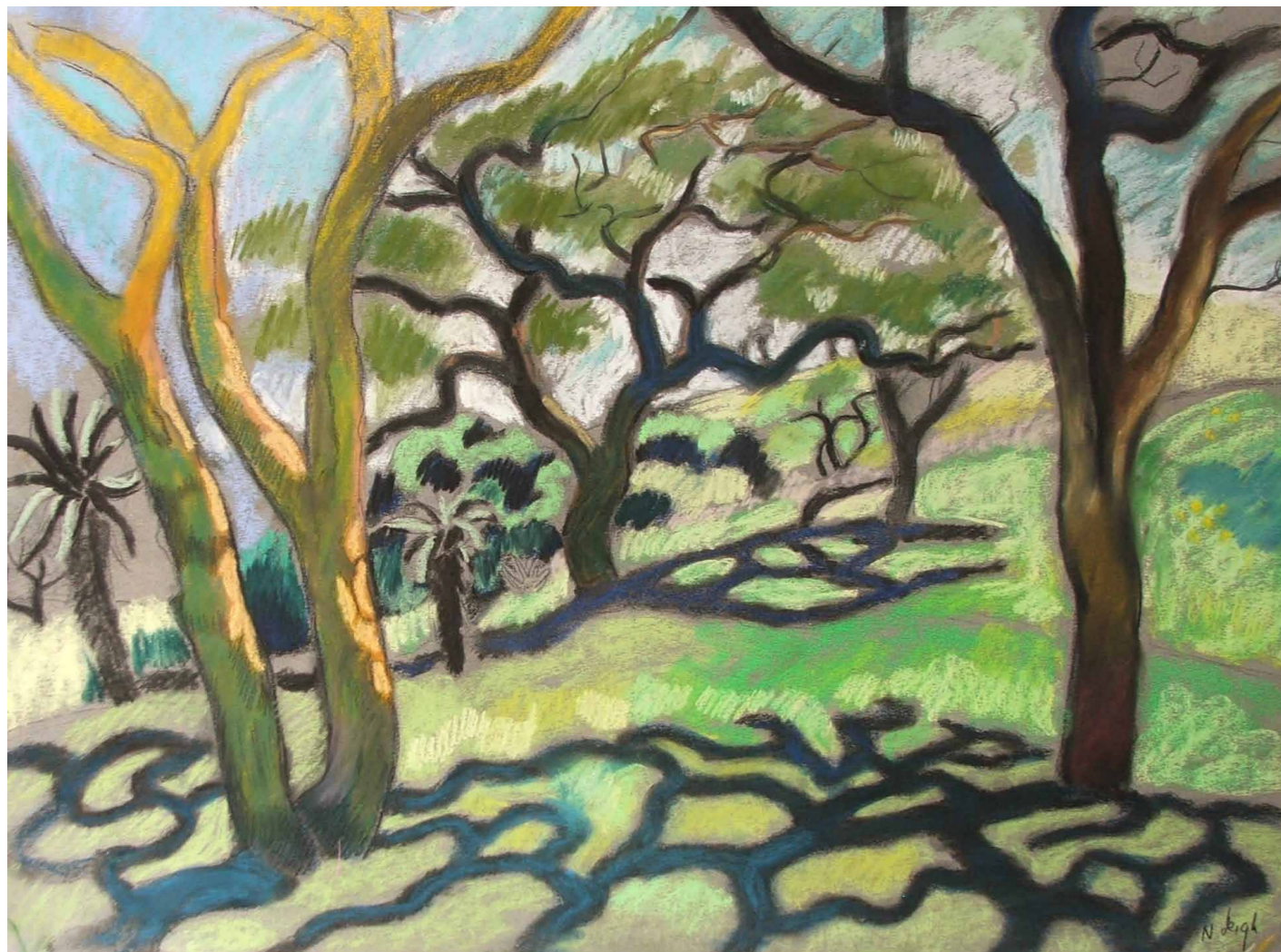
Nguni Cattle in Veld V oil on canvas 90 x 120 cm



Nguni Cattle in veld VII pastel 50 x 65 cm



Giants Castle with Proteas 2011 pastel 50 x 65 cm



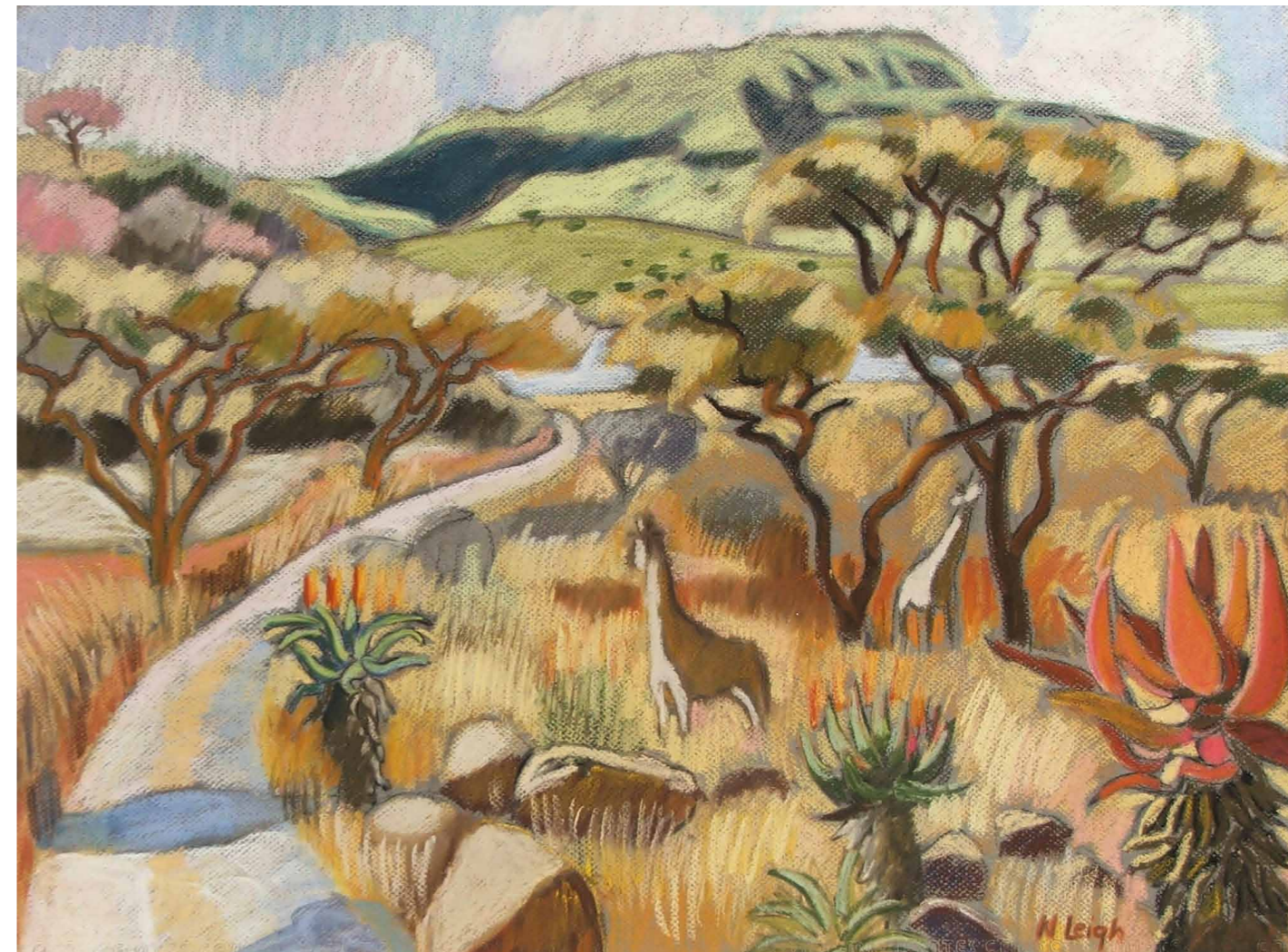
Cumberland Summer Shade pastel 50 x 65 cm

‘Considering her background, it seems inevitable that landscape engages her deeply as subject matter; it has always provided her with space for contemplation. Canvas provides her with a surface on which to articulate her internal dialogue.’

Julia Meintjes 2008



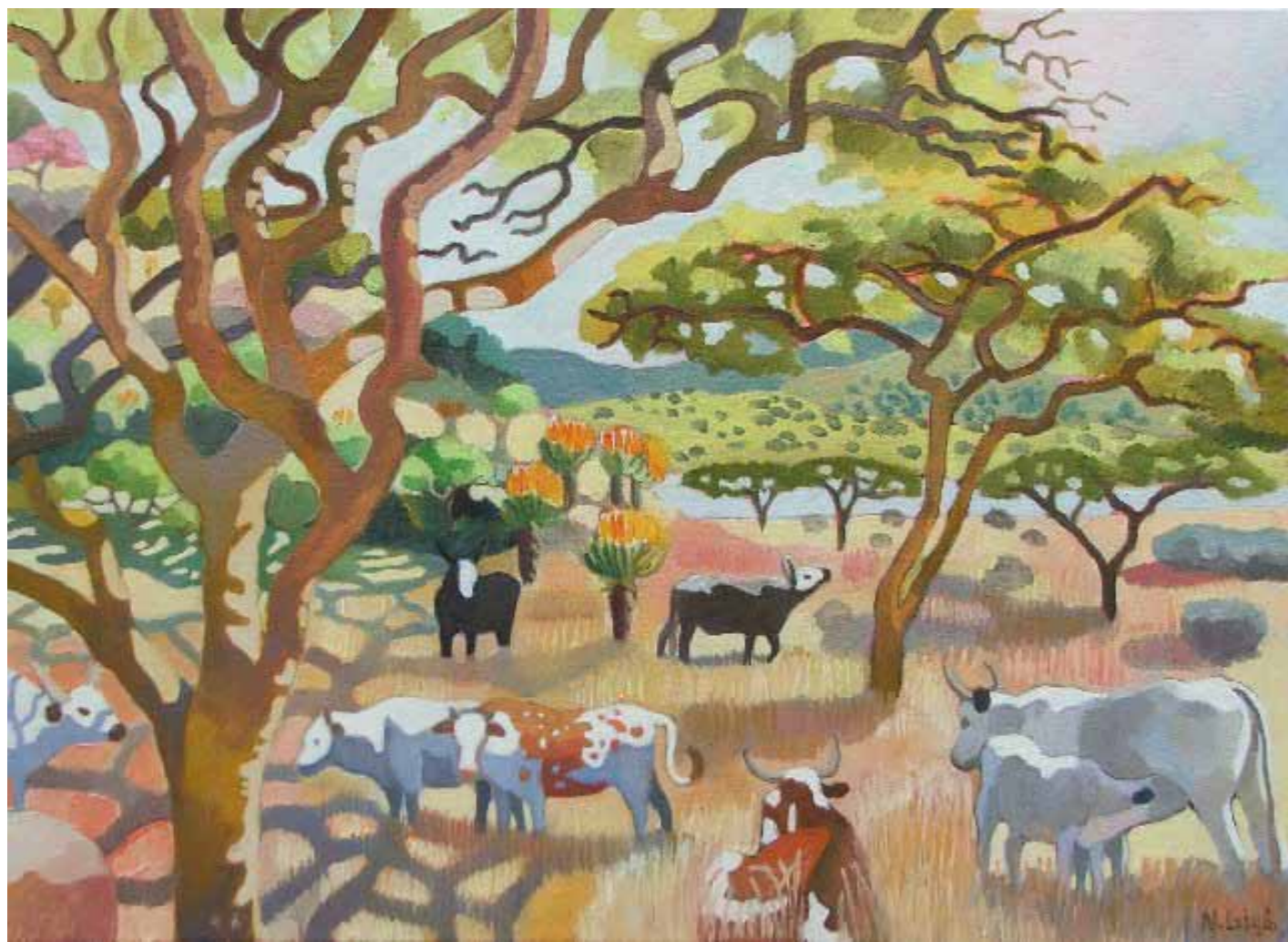
Kruger Park Huts with Monkeys pastel 50 x 64,5 cm



Spionkop Dam with Giraffe pastel 50 x 64,5 cm



Ngunis at Cumberland oil on canvas 90 x 120 cm



Spionkop Dam with Nguni's oil on canvas 56 x 77 cm



Spionkop Dam with Giraffe oil on canvas 90 x 120 cm

NICKY LEIGH Curriculum Vitae

PUBLIC AND PRIVATE COLLECTIONS

Tatham Art Gallery. Pietermaritzburg. KwaZulu-Natal.

ABSA Bank Collection, Johannesburg.

Barclays Bank Collection, Johannesburg.

Natal Provincial Administration. Pietermaritzburg.

Standard Bank Everard Collection, Johannesburg.

KPMG, Johannesburg.

First Rand. Johannesburg.

Private collectors in South Africa, France, the Netherlands, America and England.

Oppenheimer collection

PRIVATE COMMISSIONS

Mural paintings

Private home, Claremont. Cape Town (ceiling painting).

Private home, Pietermaritzburg (wall mural).

Health Department. Royal Show, Pietermaritzburg (wall mural).

EXHIBITIONS

1988 *Natal Biennale 3*, Tatham Art gallery. Pietermaritzburg. 'Interior with Pigs Head' (second prize)

1993 Collection KwaZulu-Natal Provincial Administration. Watercolour Exhibition, Tatham Art Gallery.

1993 *Momentum Art Exhibition*, Pretoria Art Museum.

1994 *Contemporary Collectibles* by Invited South African Artists, Grassroots Gallery, Westville.

1995 *Spring Arts Festival*, School of Philosophy, Pietermaritzburg.

1995 *One nation many cultures*, Joint exhibition by Msunduzi Artist and Pemba Kahle Project. Presbyterian Church, Pietermaritzburg.

1996 *KwaZulu-Natal Biennale 6* – Regional Exhibition, Tatham Art Gallery, Pietermaritzburg.

1996 *Jabulisa: The Art of KwaZulu-Natal*, Standard Bank National Festival of Arts, Grahamstown, Durban Art Gallery and Tatham Art Gallery.

1998 *15 Graduates*. Exhibition of 15 women graduates from University of KwaZulu Natal, Fine Art Department, University of Natal, Pietermaritzburg

1999 *A Group of Past Graduates*. Centre for Visual Art, University of KwaZulu Natal, Pietermaritzburg.

2000 Golden Scenario 2000 Exhibition. Menzi Mchunu Gallery. Bat Centre. Durban Harbour.

2000 *THE EVERARD PHENOMENON* An exhibition of paintings by the Everard family (Sponsored by the Standard Bank).

Standard Bank National Arts Festival, Grahamstown.

Standard Bank Gallery, Johannesburg.

Tatham Art Gallery, Pietermaritzburg.

2000 *KwaZulu-Natal Biennale*, Tatham Art Gallery, Pietermaritzburg.

2000 *Jabulisa 2000 – The Art of KwaZulu-Natal*. Tatham Art Gallery, Pietermaritzburg. Durban Art Gallery. (National Tour)

2001 *The landscape – Places seen through the eyes of 56 artists*. Northwards. Herbert Baker House, Parktown, Johannesburg. Exhibition curated by Julia Meintjes.

2003 *Cetshwayo KaMpande National portrait competition*. Tatham Art Gallery, Pietermaritzburg.

2005 Tokara Winery, Crest of the Hellshoogte Pass, Stellenbosch.

2006 Ladysmith River Arts festival. *Horses*. 9–11 June Murchison Road, Ladysmith.

2006 Wedgewood. Hilton. 15–17 September 2006. KwaZulu-Natal.

2006 *Art for conservation*. The Wildlands Conservation Trust. 20–22 October 2006. Sibaya Casino, Durban.

2006 *THE EVERARD GROUP – Then and now*. Everard Read Gallery, Johannesburg. 12–29 October 2006.

2006 *Art for conservation*. The Wildlands Conservation Trust. 20 – 22 October 2006. Sibaya Casino. Durban.

2007 *Art @ Wedgewood*. Hilton Festival 15 – 16 September 2007.

2007 *ARTWORKS @ Kwanyoni*. Exhibition of contemporary artworks. During Hilton Festival 15 – 16 September 2007

2007 *Pietermaritzburg personalities*. KZNSA shop gallery. Durban. 10 July 2007

2008 *ARTWORKS @ Kwanyoni*. Exhibition of contemporary artworks. During Hilton Festival 15 – 16 September

2009 *Contemporary Reflections*, Tatham Art Gallery, Pietermaritzburg

2009 *Fabulous Picture Show*, Tatham Art Gallery, Pietermaritzburg. 2009

2009 *More and Less Colour* Tokara. Stellenbosch Wine Farm. Feb 2009. Curated by Julia Meintjes

2009 *Cabinet Reshuffle* Tokara. Stellenbosch Wine Farm. June 2009. Curated by Julia Meintjes

2010 *JABULISA 2010* Tatham Art Gallery. Touring KZN and selected venues in SA

2011 *Points of View*. Tokara. Stellenbosch Wine Farm. Sept 2011. Curated by Julia Meintjes

2011 *Wat Kyk Ons?* Tokara. Stellenbosch Wine Farm. Jan 2011. Curated by Julia Meintjes

SOLO AND TWO PERSON EXHIBITIONS

1997 *PAIN AND HOPE*, NSA Gallery, Durban. 12 – 30 October

2003 *ENCAGED*. RAU Art Gallery. Johannesburg. Joint exhibition with Helena Hugo. 6–27 August 2003.

2004 *ANIMALS IN CAPTIVITY* Tatham Art Gallery. Pietermaritzburg. 13 January – 29 February 2004

2008 *UCT Irma Stern Museum*. Exhibition with Diamond Bozas curated by Julia Meintjes. 21 October – 8 November 2008. Rosebank. Cape Town

2009 *DEPRESSION – Through the fire*. Jack Heath Gallery. Centre for Visual Arts. UKZN. Pietermaritzburg. In conjunction with **Mood disorders lectures** presented by professionals in the field of mental health. **DVD produced and for sale**

